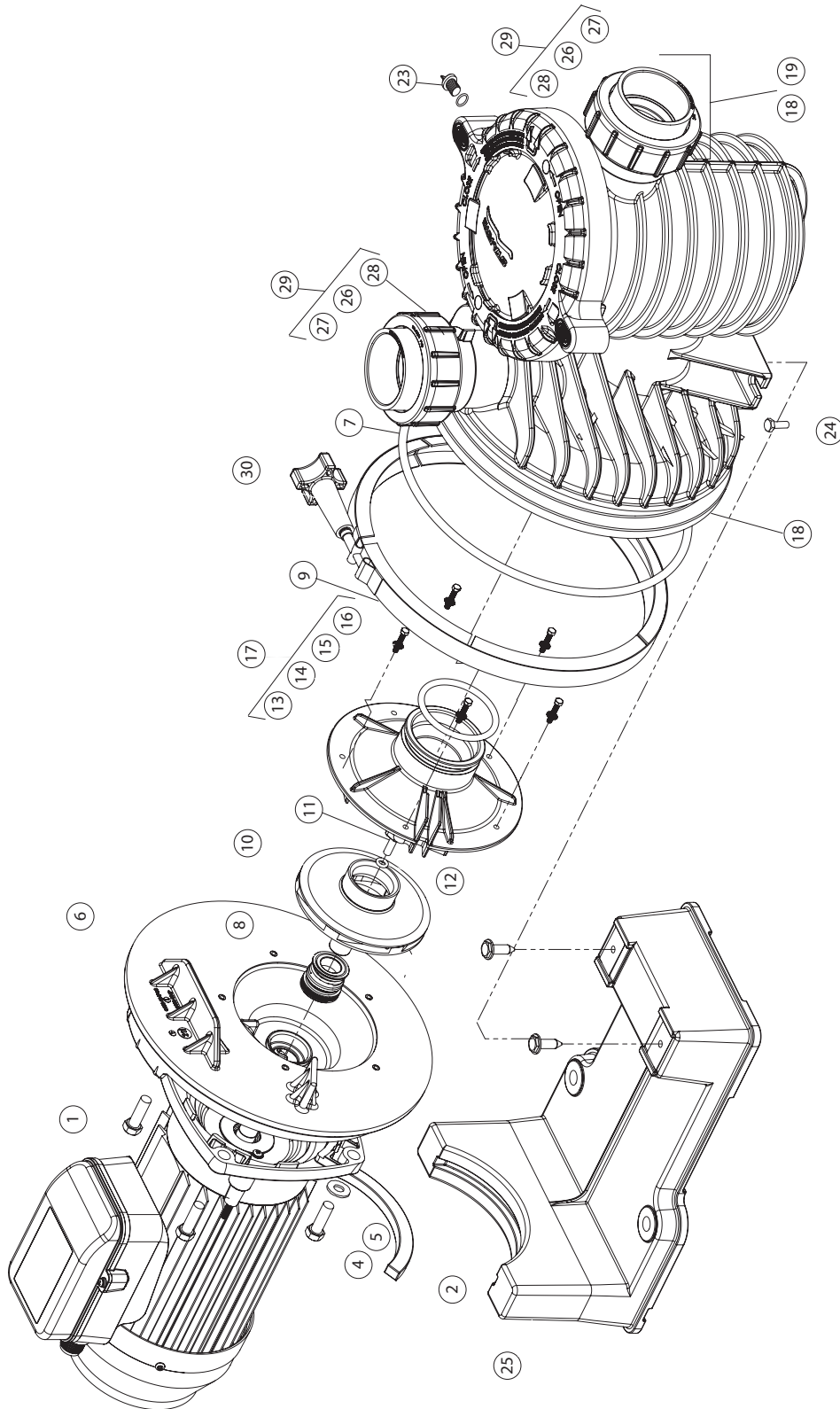


# MAX-E-PRO SERIES PUMP

## REPLACEMENT PARTS



<sup>5</sup> Pumps built after 8/29/07.

<sup>6</sup> Pumps built on or before 8/29/07.

# MAX-E-PRO SERIES PUMP

## REPLACEMENT PARTS

Item	Description	Part No.	Part No.	Part No.	Part No.	Part No.	Part No.	Part No.	Part No.
1	MOTOR 1Phase	MP730100	MP930100	MP110100	MP1108100	MP1500100	MP1508100	MP2201100	MP2208100
2	Motor Pad	801418	801419	801419	801366	801420	800565	801482	800565
3	Water Slinger	C35-44	C35-44	C35-44	C35-44	C35-44	C35-44	C35-44	C35-44
4	Screw 3/8inUNC x 1in Hex Hd S/St			801279 (Motor Fasteners Kit - Includes 4x Bolts and 4 Washers)					
5	Washer 3/8in x 3/4in x 18g St/St			801279 (Motor Fasteners Kit - Includes 4x Bolts and 4 Washers)					
6	Seal Plate	C103-194PSSG	C103-194PSSG	C103-194PSSG	C103-194PSSG	C103-194PSSG	C103-194PSSG	C103-194PSSG	C103-194PSSG
7	O-ring - Body	U9-228A	U9-228A	U9-228A	U9-228A	U9-228A	U9-228A	U9-228A	U9-228A
8	Seal	801428	801428	801428	801428	801428	801428	801428	801428
9	Clamp	C19-37A	C19-37A	C19-37A	C19-37A	C19-37A	C19-37A	C19-37A	C19-37A
10	Impeller	C105-238PPB	C105-238PRB	C105-238PSB	800765	800766	800766	800767	800767
11	Impeller Screw (3 phase only)	-	-	-	37337-6080	37337-6080	37337-6080	37337-6080	37337-6080
12	O-RING Impeller Screw (3 phase only)	-	-	-	SR35505-1426	SR35505-1426	SR35505-1426	SR35505-1426	SR35505-1426
13	Diffuser	C1-271P1	C1-271P1	C1-271P1	C1-271P1	C1-271P1	C1-271P1	C1-271P1	C1-271P1
14	O-RING DIFFUSER	U9-374	U9-374	U9-374	U9-374	U9-374	U9-374	U9-374	U9-374
15	Lockwasher								
16	Screw - Diffuser	707371	707371	707371	707371	707371	707371	707371	707371
17	Diffuser kit (Includes 13,14,15 and 16)	801273	801273	801273	801273	801274	801274	801274	801274
18	Tank Body Assembly	17307-0110W	17307-0110W	17307-0110W	17307-0110W	17307-0110W	17307-0110W	17307-0110W	17307-0110W
19	Trap Cover								
20	O-ring - Trap Cover	35505-1440	35505-1440	35505-1440	35505-1440	35505-1440	35505-1440	35505-1440	35505-1440
22	Basket	C8-58P	C8-58P	C8-58P	C8-58P	C8-58P	C8-58P	C8-58P	C8-58P
23	Drain Plug & O-ring	U178-920P	U178-920P	U178-920P	U178-920P	U178-920P	U178-920P	U178-920P	U178-920P
24	Screw - Base	SRU30-918SS	SRU30-918SS	SRU30-918SS	SRU30-918SS	SRU30-918SS	SRU30-918SS	SRU30-918SS	SRU30-918SS
25	Base with Motor Pad and screws	C4-79P	C4-79P	C4-79P	C4-79P	C4-79P	C4-79P	C4-79P	C4-79P
26	O-RING - Barrel Union								
27	Collar - Barrel Union Slip - 2"								
28	Nut - Barrel Union								
29	Union kit (Includes 26, 27 and 28)	801245K	801245K	801245K	801245K	801245K	801245K	801245K	801245K
30	WC 36-22								