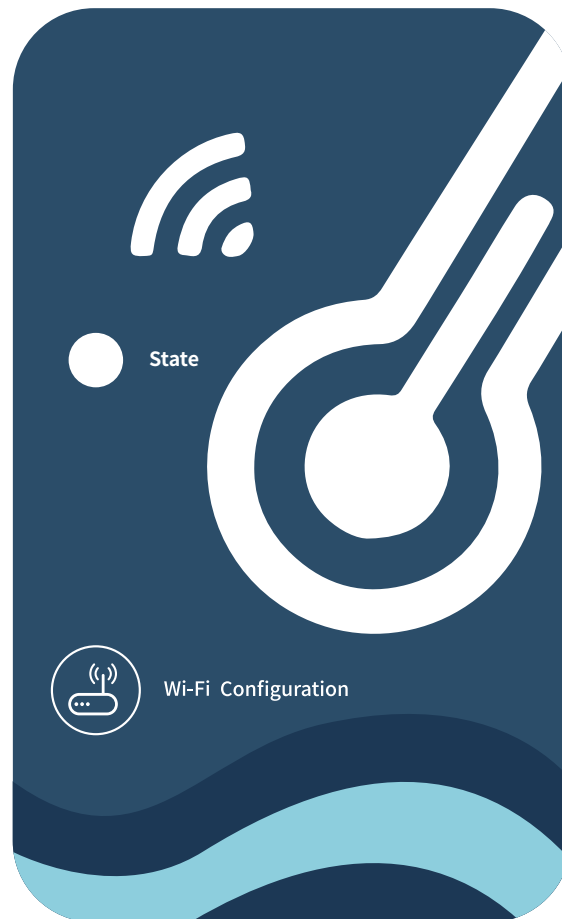


# WIFI Module

# USER'S MANUAL



Please read this user's manual carefully before use  
Please keep this user's manual properly

## Basic Parameters

---

Form	WiFi	Bluetooth
Transmission frequency (GHz)	2.412~2.472	2.402~2.480
Max transmission power	802.11b: +16dBm(@11Mbps)	10dBm
	802.11g: +15.5dBm(@54Mbps)	
	802.11n: +15dBm(@HT20,MCS7)	
Power Supply Voltage (V)	3.0~3.6	
Supply Current	Peak (continuous transmission): 260mA	
	Average (STA, networked standby): 24mA(DTIM1)	
	Average (STA, 1KB/s): 54mA	
	Average (AP): 85mA	
Working Temp(°C)	-40~85	
Storage Temp(°C)	-40~125	

## Disposal instructions

---



### Disposal of the old appliance

Appliance marked with the symbol shown here must not be disposed of in the domestic refuse.

You are obliged to dispose of such old electronic appliances separately. Please consult your local authority about the possibilities of organised disposal. With this environment-friendly form of disposal, old appliances are recycled or used in other forms.

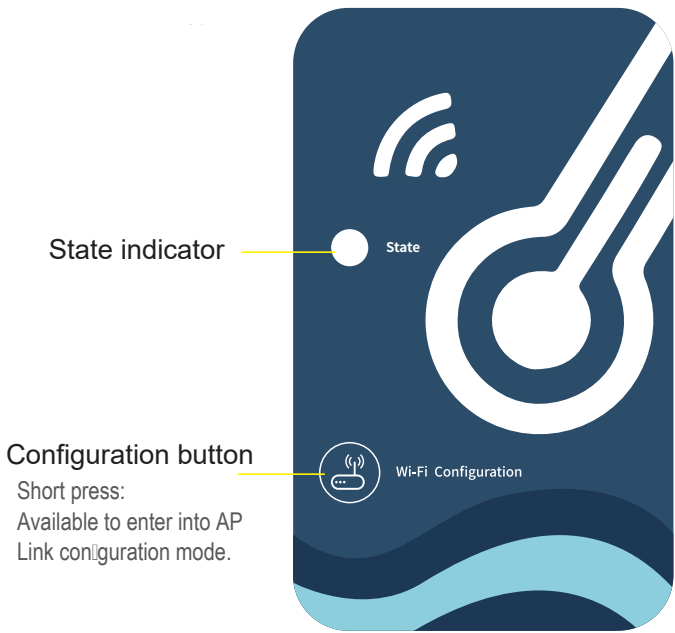
## Installation

---

- There is a magnet on the back of the WIFI module, it can be installed indoors or outdoors, and avoid direct sunlight;
- Please scan the following QR code to download APP;



# Functional Description



The starte indicator status is as follows :

Color	State
Red	Configuring Network
Purple	Connecting the router
Blue	Connecting to the server
Green	Normal communicate with server
Flicker	Abnormal communication with main board

# Account Login

Use email address and password to register, login or reset the password.

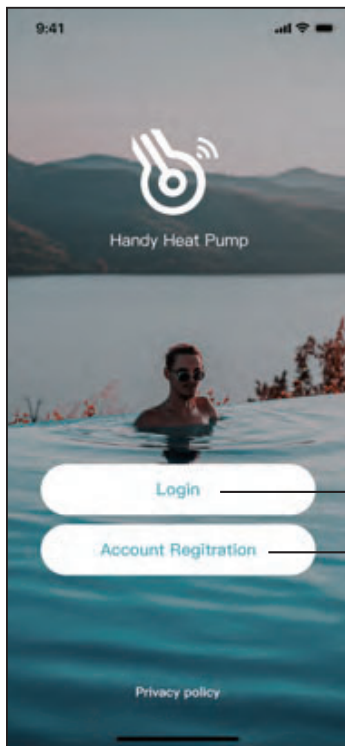


Fig.1 Home page

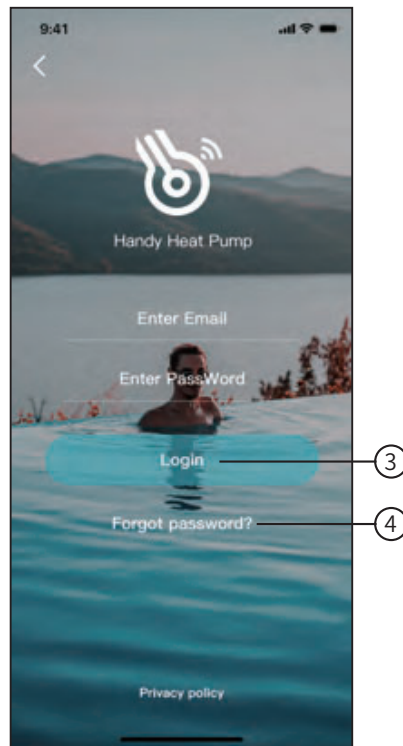


Fig.2 Login interface

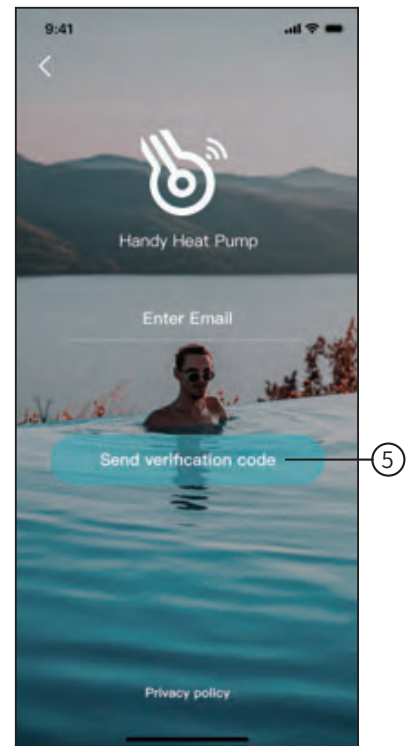


Fig.3 Register and retrieve passwords

1. Account registration: Click ① (Fig. 1) on the home page to jump to the account registration interface (Figure 3).
2. Login: Click ② (Fig.1) on the home page to jump to the login interface (Fig.2) and follow the instructions on the page (as shown in the figure).Enter your registered email address and password, and click ③ to jump to the device list.
3. Forgot Password: When you forget your password, click ④ (Fig.2) and jump to the password forgotten interface (Fig.3).Fill in the relevant information according to the page instructions, click ⑤ to send the email verification code, and operate according to the page instructions.

# Add Device

After logging, displays My Device interface (Fig. 4) , follow the instruction to add WIFI or DTU.

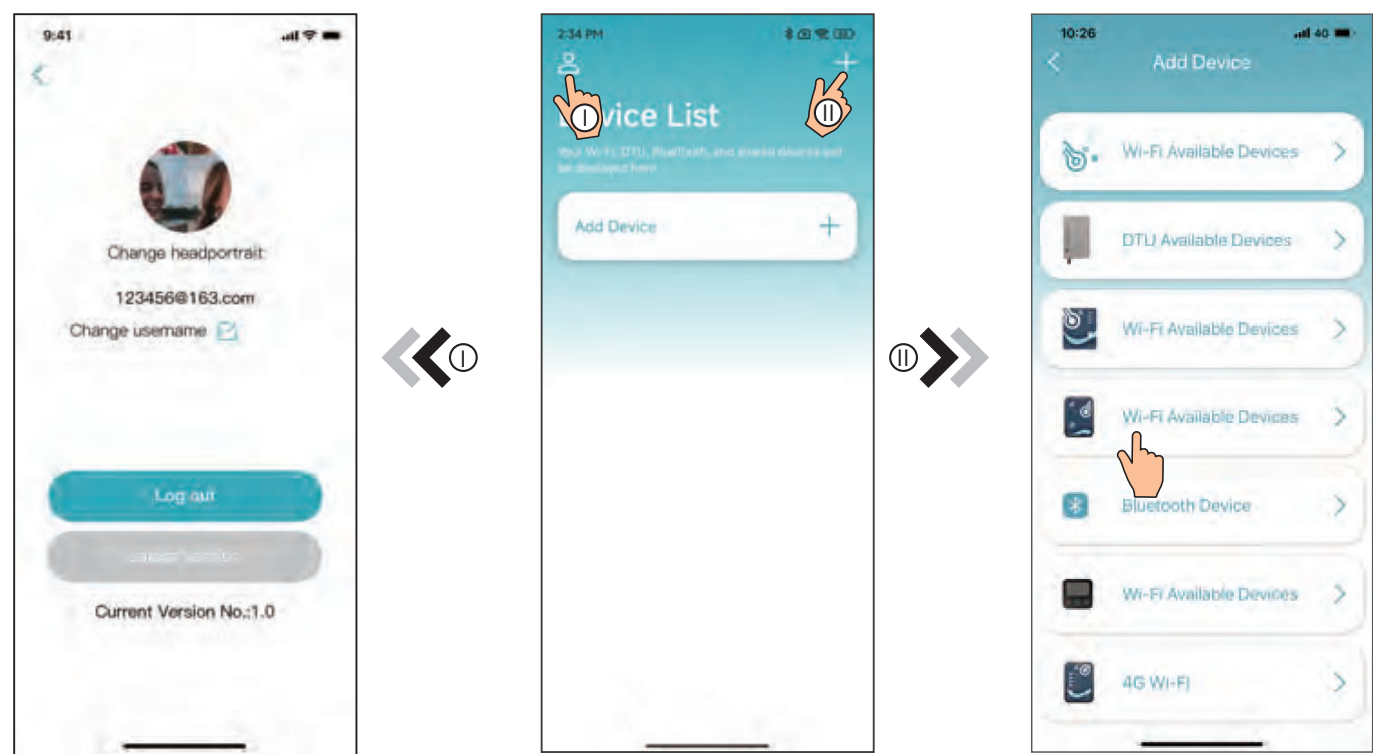


Fig.5 The left-hand menu

Fig.4 My Device interface

Fig.6 Add Device interface

# WIFI Configure Network

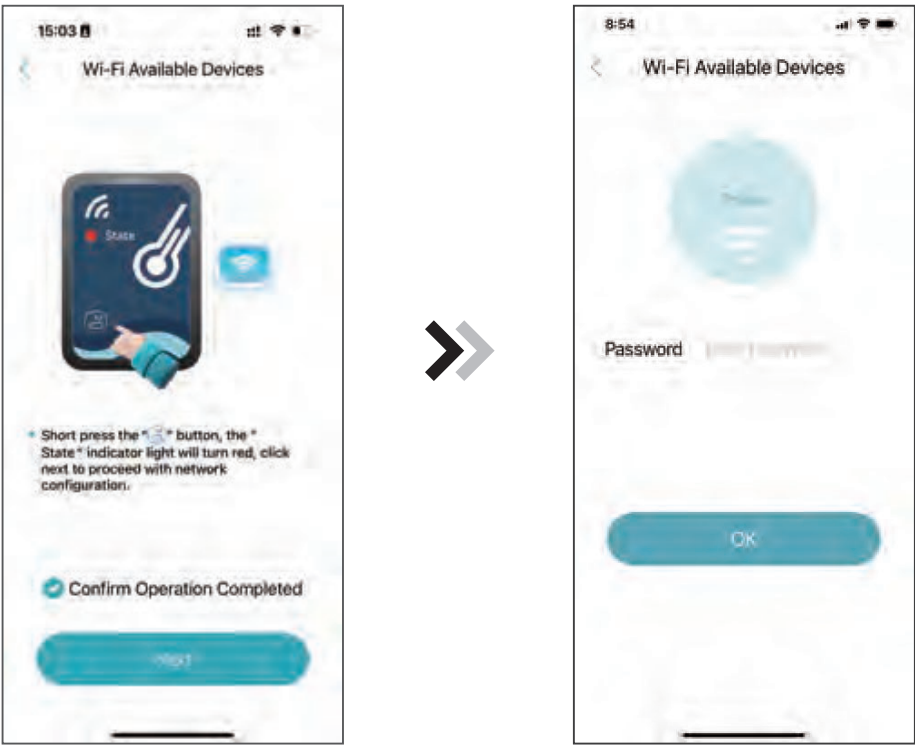


Fig.7 WIFI Module On interface

Fig.8 Enter password interface

## WIFI Configure Network

1. Follow the instructions on the page (Fig.7), press button on module and hold for 1s till two lights on, then AP connection is activated;
2. Click "Next" to enter the wifi password for the current connection(Fig 8), the APP automatically searches for wifi module (Fig 10);



Fig.9 Searching device interface



Fig.10 Bond device interface



Fig.11.2 Manual input interface



Fig.11 Scanning interface



Fig.11.1 WF/SN barcode

3. Click "Bond device" (Fig.10) to allow the App to use the camera for scanning the serial number/wifi code on the heat pump(Fig.11.1), or click "Manual input" to enter the serial number/wifi code(Fig.11.2).
- 4.Click "Bond device", device bond is done (Fig.12);
5. After WIFI bonding is done, and jump back to My Device(Fig. 13).



Fig.12 Bond Device interface

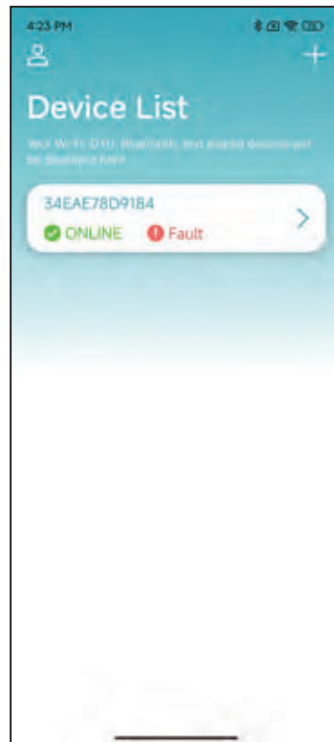


Fig.13 Device management interface



Fig.14 Device Main interface

# Device Management

Device management operations are as below :



Fig.20 Modify target temperature



Fig.19 Device Main interface

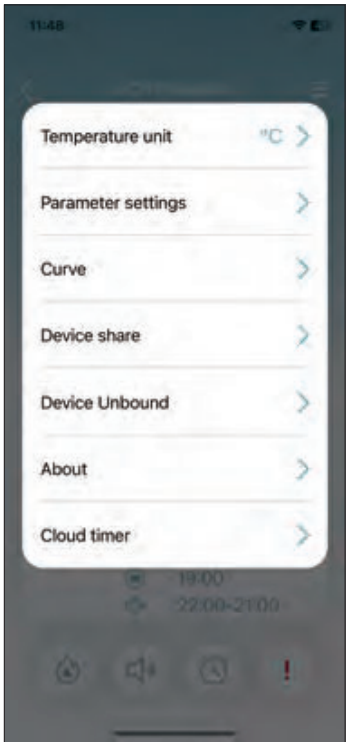


Fig.21 The right-hand menu interface

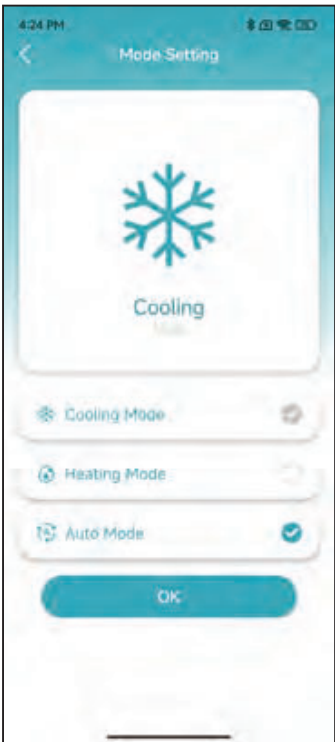


Fig.22 modify mode

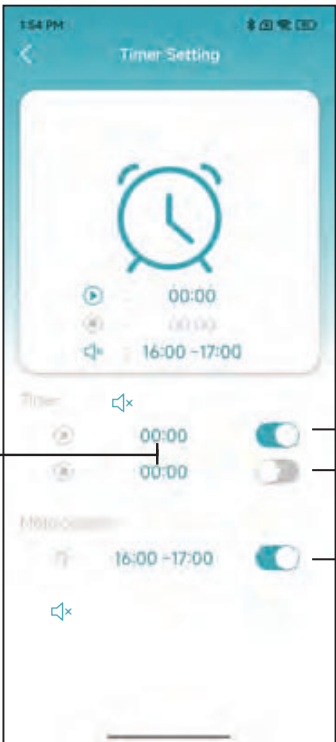


Fig.23 Timing Settings interface

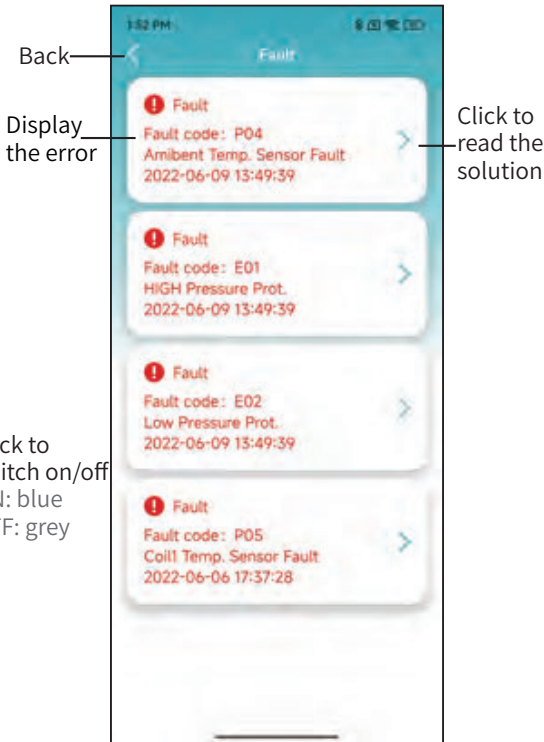


Fig. 24 Troubleshooting interface





Fig.25 Device Main interface

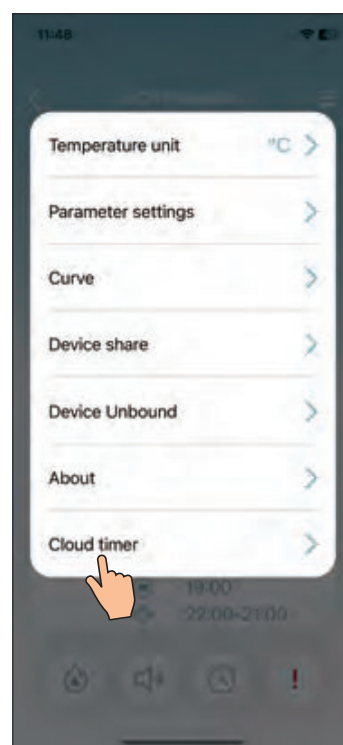


Fig.26 The right-hand menu interface



Fig.27 Cloud timer list

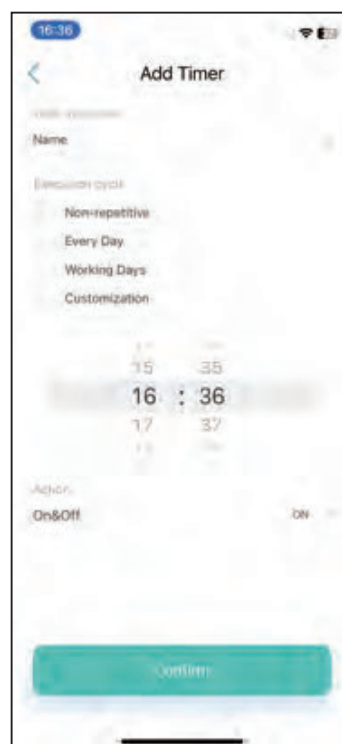










Fig.28 Cloud timer setting interface

ICON	NAME	FUNCTIONS
	ON/ OFF	Click it to turn on/ off the unit
	Silent Mode Off	Display silent mode off, click it to activate the silent mode
	Silent Mode On	Display silent mode on, click it to turn off the silent mode
	Mode shift	Mode changing: Cooling,Heating,Auto
	Cooling	Display Cooling mode, click it to change operating mode
	Heating	Display Heating mode, click it to change operating mode
	Auto	Display Auto mode, click it to change operating mode
	Timming settings	Click it to jump to the timer on/ off and mute timer setting interface
	Troubleshooting	Click it to jump to the troubleshooting interface